

HopUp Display

Components

Carrying Bag



Frame



Banner (Attached to Frame)

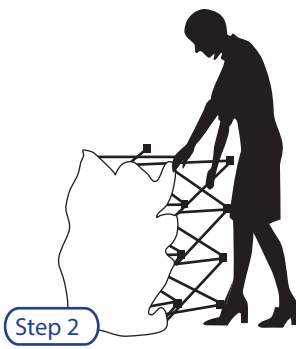


Assembly Instructions



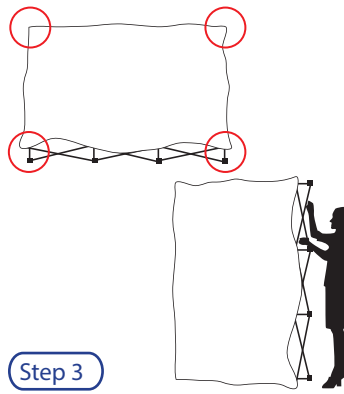
Step 1

Remove frame and graphic from nylon bag.



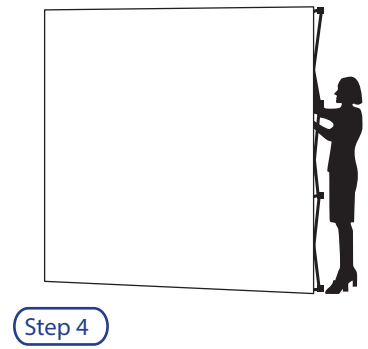
Step 2

Ensure "adjustable feet" of the frame are on the floor. Pull up display into upright position.



Step 3

Lay down the the HopUp and lock each corner hook, then stand up the Hopup and lock all hooks between front and back hubs.



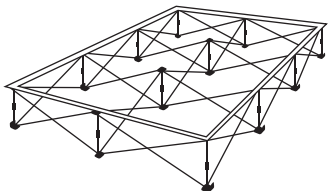
Step 4

Adjust leveling feet for desired angle. Ready pop display can now easily be moved into position.

WARNING: To avoid damage, separate end caps & disconnect ALL hooks before collapsing the frame.

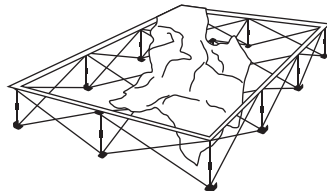
ATTENTION: Avoid getting fabric products wet. Do not wash or dry clean.

How to install or replace the banner on your HopUp stand:



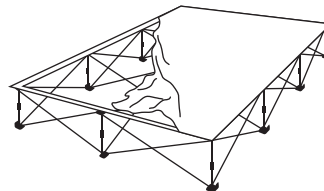
Step 1

Assemble frame and lay flat on its back. Remove existing graphic.



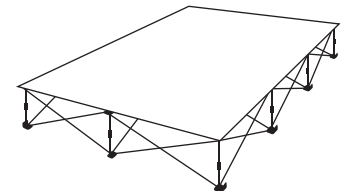
Step 2

Starting at one corner, attach velcro on the banner to velcro on the stand. NOTE: It is ok if the banner extends beyond the edge of the frame slightly.



Step 3

Working in a continuous direction around the frame, attach the rest of the banner. Make sure the banner is pulled tight while attaching the velcro.



Step 4

If needed, adjust velcro for taut fit.

Call us at [800.538.6544](tel:800.538.6544) for any issues you might have regarding output, equipment, and installation.

ATTENTION:

To avoid damage, separate end caps
& disconnect ALL hooks before collapsing the frame.

Improper takedown will result in a damaged frame and void warranty.

